



Oakwood Academy Newsletter

"Living, learning and thriving"

School Telephone Number (01752) 775478

Email address – oakwood.office@discoverymat.co.uk

www.discoverymat.co.uk

www.oakwood-primary-academy.eschools.co.uk

Facebook - <https://www.facebook.com/Discovery-Multi-Academy-Trust-178244126147131/>



26th November 2020

Meet the Oakwood Team

Meal Time Assistant Team

Our Meal Time Assistant Team (known as MTAs) support lunchtime for all our children. This year, due to the measures we have had to put in place to support the health and safety of children and staff, lunchtime is very, very different. As you know the children are in bubbles and this remains in place over lunchtime so our MTA team support 4 staggered bubble lunchtimes. In Reception and Years 1 and 2, children have their lunches delivered to their classroom. In years 3, 4, 5 and 6, children with a packed lunch eat in their classroom and children having a hot dinner eat in the dining hall in the designated spaces for their bubble.

The MTAs have worked incredibly hard delivering and serving lunches and then clearing up at the end of each bubble lunch before helping to support supervision of the children in the designated playground areas. They don't do this alone though, this year Teachers and Teaching Assistants also support each lunchtime, this may involve serving food, clearing up and the supervision of children, this varies depending on the bubble group.

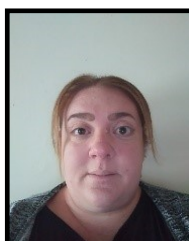
This is whole team effort and I would like to say a big thank you to the MTAs, Teachers and TAs for the incredible work they do every lunchtime to make this work for all the children.



Mrs Beech



Miss Bright



Mrs Jenkins



Mrs Olver



Miss Russell



Children In Need

Thank you so much for your generous donations for Children in Need.

We managed to raise £286.99.

Pudsey sends a big 'thank you' hug to you all!

Celebration Shout Out!

Please feel free to email the school with any pupil achievements you'd like celebrated! We would love to share them with everyone through our newsletter.



Odd Sock Day

Thank you to all the children and staff who wore their odd socks to recognise and show defiance against bullying. It was a great opportunity to encourage people to express themselves and celebrate their individuality. The children took part in lots of activities in their classrooms, including designing their own odd socks and making a 'Unite Against Bullying' pledge.



Well Done!

All the children continue to impress us all with the amazing way they have settled into school life. Their resilience is inspiring and it's wonderful to see how much they have developed in confidence and with their positive attitude to learning since the beginning of the year. We are very proud of them all. We know that at different times children may need that little bit of extra support, if you have any queries about your child, please contact the school office by phone or email and we will get back to you. Thank you for your ongoing support in these challenging times.

Newsletter Ideas

If you have any ideas about information or updates that you would find useful additions to our newsletter, please email your suggestions to oakwood.office@discoverymat.co.uk

Attendance For Week Ending 20th November 2020

The expected average percentage attendance for a child is 96%.

**Well done to
Wren KS1 and Kestrel KS2
for the highest
attendance!**



Robin	97.3%
Owl	95.9%
Wren	98.0%
Dove	96.6%
Puffin	93.6%
Jay	95.5%
Starling	94.4%
Skylark	97.7%
Goldcrest	95.3%
Osprey	95.2%
Kestrel	98.3%
Peregrine	94.1%


Important Reminders

Covid Symptoms

No child should come to school if they, **or anyone they live with**, has symptoms of Covid-19. These are:

- A new persistent cough
- A high temperature
- A change in their normal sense of taste or smell.

Please ring the school office to inform the school of any absence related to Covid and outcomes from tests promptly. Please leave a message on the school answerphone if this is before or after school hours. Thank you for your continued support in this matter.



If your child has:
a high temperature
a new, continuous cough, or
a loss of, or change in, sense of
smell or taste

This could be a sign of
coronavirus

Book a test

If your child has:
a runny nose, is sneezing or
feeling unwell
But they don't have:
a high temperature
a new, continuous cough, or
a loss of, or change in,
sense of smell or taste

These are
**not normally symptoms of
coronavirus**

Seek advice from a pharmacy, dial
111 or see your GP

The following information is from the NSPCC — Metaphors

Using these metaphors can boost our understanding of child development and increase support for ensuring children and young people have healthy development and grow up in supportive and loving families and communities.

This week:

Toxic Stress - Toxic Stress happens when a child experiences severe and on-going stress – like extreme poverty, abuse or violence in the community – without consistent supportive relationships. Here's a video to illustrate the metaphor: <https://www.youtube.com/watch?v=YFarEj1sGA&list=PLqA6Q-vvA4sNtS7A0ONhiXoNsHIAhTBJG&index=2&t=0s>



ChatHealth

**NEW Health Visiting and School Nursing
TEXT SERVICE**

PARENTS. CARERS. YOUNG PEOPLE.

If you'd like some health advice or support, but are a bit worried about seeing or talking to a professional, our new ChatHealth is perfect for you!

Simply text one of the numbers below and one of our team will text you back

 0-5 years Parents Service 07480 635188	 5-19 years Parents Service 07480 635189	 11-19 years Young People's Service 07480 635198
--	---	---

Livewell

CATCH IT

Germs spread easily. Always carry tissues and use them to catch your cough or sneeze.



BIN IT

Germs can live for several hours on tissues. Dispose of your tissue as soon as possible.



KILL IT

Hands can transfer germs to every surface you touch. Clean your hands as soon as possible.



Diary Dates

(Dates maybe subject to change)



Please note the non-pupil days for this year

2020/2021 TERM DATES

Wed 16th Dec
Thu 17th Dec
Fri 18th Dec
Mon 21st Dec - Fri 1st Jan 2021
Mon 4th Jan
Mon 15th Feb - Fri 19th Feb
Mon 22nd Feb
Thu 1st Apr
Fri 2nd Apr - Fri 16th Apr
Mon 3rd May
Mon 31st May - Fri 4th Jun
Fri 23rd Jul
Mon 26th Jul - Fri 3rd Sep

Christmas Lunch - Rec/KS1
Christmas Lunch - KS2
School finishes 3:15pm
CHRISTMAS HOLIDAYS
School opens 8:45am
HALF TERM
Non-Pupil Day
Non-Pupil Day
EASTER HOLIDAYS
May Bank Holiday
HALF TERM
School finishes 3:15pm
SUMMER HOLIDAYS

2021/2022 TERM DATES

Wed 8th Sep
Mon 25th-29th Oct
Fri 26th Nov
Fri 17th Dec
Mon 20th Dec-Mon 3rd Jan
Mon 21st Feb-Mon 28th Feb
Fri 8th Apr-Fri 22nd Apr
Mon 2nd May
Monday 30th May-Fri 3rd Jun
Wed 27th Jul
Wed 27th July-Wed 31st Aug

School opens 8:45am
HALF TERM
Non-Pupil Day
School Finishes
CHRISTMAS HOLIDAYS
HALF TERM
EASTER HOLIDAYS
May Bank Holiday
HALF TERM
School finishes at 3.15 pm
SUMMER HOLIDAYS



Contacting School

If you are contacting school to report an absence or you have a query, please leave a message on the answer phone with your child's name and class and we will get back to you. Thank you



Be safe and have a great weekend!
Jackie Sparrow
Head of School