



Oakwood Academy Newsletter

"Living, learning and thriving"

School Telephone Number (01752) 775478

Email address – oakwood.office@discoverymat.co.uk

www.discoverymat.co.uk

www.oakwood-primary-academy.eschools.co.uk

Facebook - <https://www.facebook.com/Discovery-Multi-Academy-Trust-178244126147131/>



4th February 2022

SAFETY WEEK

As part of our work on Safety this week, on Monday 31st January, Wye Class conducted a road survey for Southway Drive, the main road just outside the school grounds. We needed to use our STEM skill of *observation*, so we stationed ourselves by the fence area just outside the year 5 and 6 classrooms. This meant we had a safe place to watch from our school grounds. We recorded how many different types of vehicles we saw go past over 10 minutes and noted any safety concerns we saw.

The results of our traffic survey were as follows:

Cars: 322

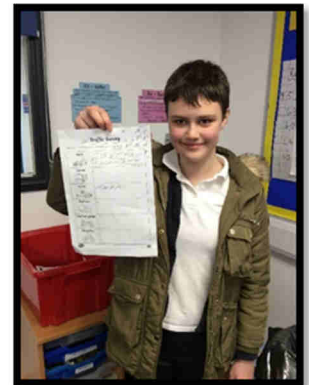
Vans: 24

Lorries: 3

Motorbikes: 4

Cyclists: 2

Buses: 0



We were quite surprised that 322 cars went past in only 10 minutes! It was a busier road than we thought it would be and there was a range of different modes of transport which went by. We also noticed that some cars were driving too fast and lots of cars were not indicating when they were turning out of the junction. We have been learning about Road Safety for Safety Week, which is especially important for us in Year 6 as most of us walk to and from school by ourselves. We discussed ways we can stay safer crossing roads such as being aware of our surroundings and not texting or talking on a phone. This is especially important as many of Year 6 will be completing longer journeys next year travelling to secondary school independently.

Our message from Wye Class is –

Help keep us all safe – please don't speed when driving near our school!

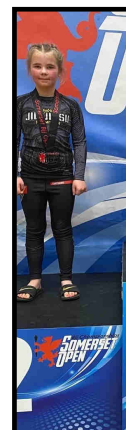
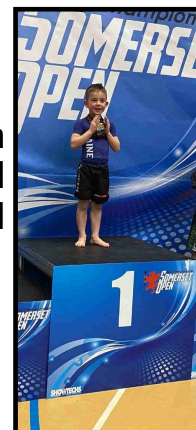


Celebration Shout Out!

Please feel free to email the school with any pupil achievements or special efforts you'd like celebrated! We would love to share them with everyone through our newsletter.



Lewis (Severn) and Georgina (Trent) competed at the British Jiu Jitsu Somerset Open last weekend. Lewis won Gold and Silver medals and Georgina won Silver and Bronze. Well done to them both and keep up the good work!



Parent Session

Do you want to find out more about child development?

Do you want to find out what your child's behaviour means and where it is coming from?

Do you want to meet with other parents to share ideas and information?

Please join Mrs O'Brien virtually on **Tuesday 8th February at 1pm.**

Please register your interest with the office by emailing:

oakwood.office@discoverymat.co.uk (please add "parent session" into the subject box)



Renaissance Reading Program

When children have finished reading a book they take a Ren Reading quiz to answer questions on the book that they have completed. When quizzes are passed, the number of words in the books are totalled together and a weekly word count for each class is accumulated.

Each week we will look at the word count totals for each class and the winners of Key Stage 1, Lower KS2 and Upper KS2 will get a few minutes extra play at breaktime! Our winners this week are:-

KS1 - Thames Class - 15,449 words

Lower KS2 - Lagan Class - 135,638 words

Upper KS2 - Tyne Class - 299,125 words

Well done to those classes!



Training & Careers Fair

Health and Social Care Skills
Accelerator Programme



- Meet employers
- Speak with lecturers
- Receive advice

Find out what you can study for FREE

PINPOINT, UNION STREET, PL1 2SR
Wednesday 9 February,
10.00am to 12noon



Proud to Care
HEALTH AND CARE RECRUITMENT IN DEVON



European Union
European
Social Fund

Attendance For Week Ending 28th January 2022

The expected average percentage attendance for a child is 96%.

**Well done to Tamar KS1 and
Severn KS2 for the highest attendance!**



Tamar	95.6%
Lynher	95.0%
Fowey	89.9%
Avon	91.9%
Thames	93.5%

Severn	98.5%
Medway	93.9%
Trent	77.3%
Lagan	76.9%
Clyde	89.3%
Mersey	84.0%
Tyne	92.9%
Wye	64.2%

School Uniform Reminder

Please send your child in the correct uniform as outlined in the School Uniform Policy on our website. Children should wear grey trousers, skirt/pinafore or shorts **not leggings**.

Please remember that flat, sensible, safe, black shoes (no trainers) should be worn.



Hairclips and headbands should be plain and should not cause obstruction to anyone's learning, or cause distraction to any learner.

Children need to have their PE kit in school, as they will change in school for PE sessions. Please ensure that PE kit is as outlined in the uniform policy.

Jewellery

Children may not wear jewellery to school at any time (except for small studs, which **must be 5mm in diameter or smaller**, and watches) other than for religious or cultural reasons. Children in **Foundation** may **not** wear earrings in view of the physical aspects of their learning.

"For health and safety reasons, all pupils are required to remove earrings during PE lessons."



StreetSafe

Want to improve the safety of our local area? If you feel unsafe in any area in Plymouth please use this website to report it:

[StreetSafe | Police.uk \(www.police.uk\)](https://www.plymouth.gov.uk/streetsafe)

StreetSafe is a pilot service for anyone to anonymously tell us about public places where you have felt or feel unsafe, because of environmental issues, e.g. street lighting, abandoned buildings or vandalism and/or because of some behaviours, e.g. being followed or verbally abused.



Diary Dates

(Dates maybe subject to change)



2021/2022 TERM DATES

Mon 21st Feb - Fri 25th Feb
Mon 28th Feb
Fri 8th Apr
Mon 11th Apr-Fri 22nd Apr
Mon 2nd May
Mon 30th May - Fri 3rd Jun
Mon 27th Jun
Tue 26th Jul
Wed 27th July

HALF TERM
Non-Pupil Day
Non-Pupil Day
EASTER HOLIDAYS
May Bank Holiday
HALF TERM
Non-Pupil Day
School finishes at 3.15 pm
SUMMER HOLIDAYS START

2022/2023 TERM DATES

Wed 7th Sep 2022
Fri 21st Oct
Mon 24th - Fri 28th Oct
Fri 25th Nov
Fri 16th Dec
Mon 19th Dec 2022 - Mon 2nd Jan 2023
Tue 3rd Jan 2023
Mon 13th Feb - Fri 17th Feb
Mon 20th Feb
Fri 31st Mar
Mon 3rd April - Fri 14th April
Mon 17th April
Mon 1st May
Mon 29th May - Fri 2nd Jun
Fri 23rd Jun
Tue 25th Jul
Wed 26th Jul

School starts 8:45am
School finishes 3:15pm
HALF TERM
Non-Pupil Day
School finishes 3:15pm
CHRISTMAS HOLIDAYS
School starts 8:45am
HALF TERM
Non-Pupil Day
School finishes 3:15pm
EASTER HOLIDAYS
School starts 8:45am
Bank Holiday
HALF TERM
Non-Pupil Day
School finishes 3:15pm
SUMMER HOLIDAYS START

Contacting School

If you are contacting school to report an absence or you have a query, please leave a message on the answer phone with your child's name and class (& reason for absence, if applicable) and we will log/get back to you. Alternatively, email oakwood.office@discoverymat.co.uk
Thank you.

Newsletter Ideas



If you have any ideas about information or updates that you would find useful additions to our newsletter, please email your suggestions to:

oakwood.office@discoverymat.co.uk



Have a lovely weekend!
Jackie Sparrow - Head of School